

CCTV SMPS | ARCTIC SERIES

4 Channel



AS-1205 (Arctic Series Power Supply) Comes with Block Terminal. It delivers 5A current (Max) via output terminal.

Protections:

It Includes Various Protections such as Overload, overvoltage, Over Current, Short Circuit, and Over Temperature Protection.

Aesthetic:

Unique, Compact design, Rainproof. It is suitable for Outdoor applications.

Strong and Durable:

Aluminium Casing for better heat dissipation.

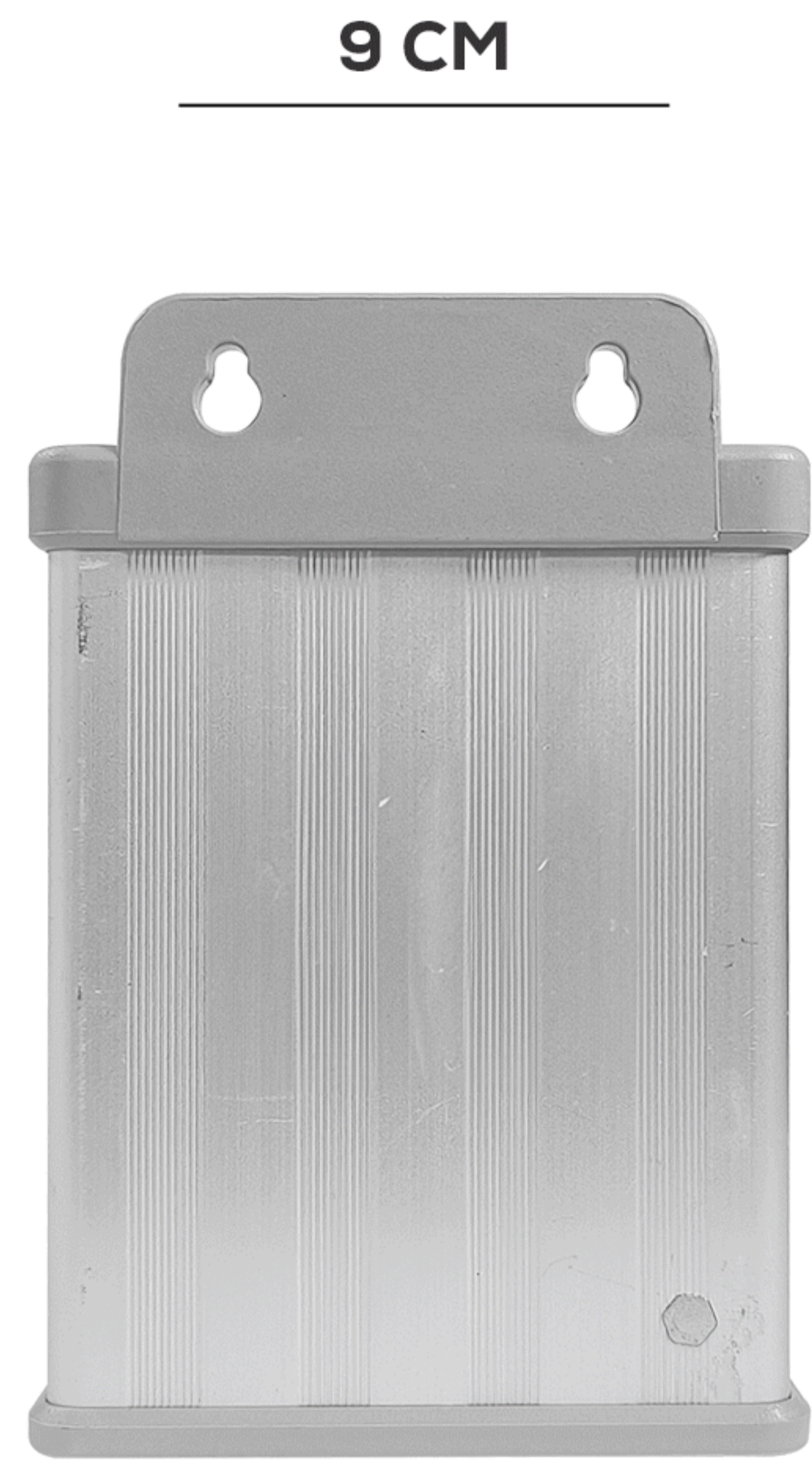
Led Indicator:

Led indicator for the functional status.

Technical Specifications

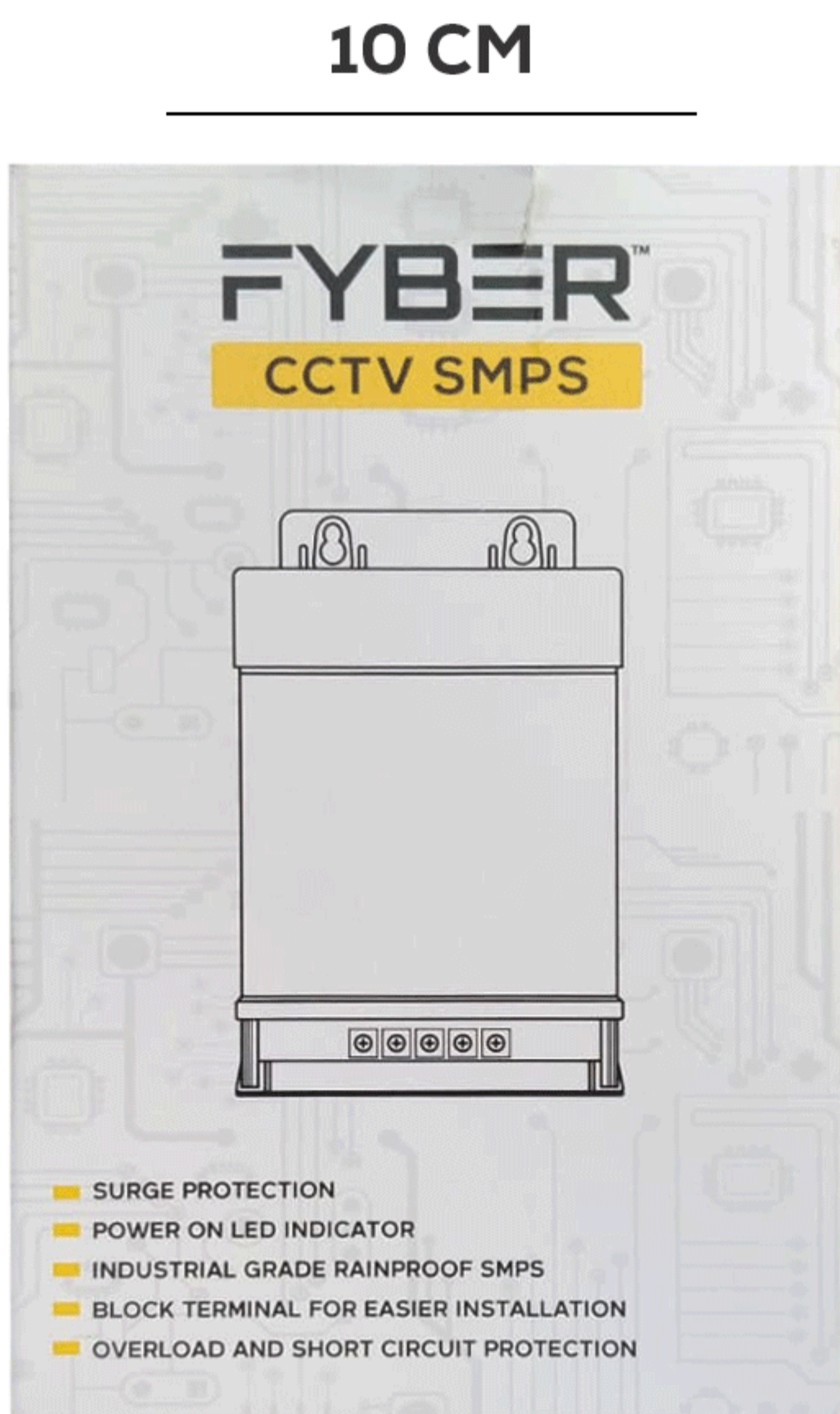
Feature	Specification
AC Input Voltage	150~265VAC
DC Output voltage	12~15VDC
Rated Power	75W
Ripple & Noise (max.)	140mV(max)
Voltage Adj. Range	NA
Device	Primary-Side Regulation
Device(frequency)	132KHz
VDS Voltage	616V(max)
Line Regulations	±1%
Load Regulations	±5%
SCP	Output short-circuit protection
OPP, OCP	Output overload/over-current protection
OVP	Output overvoltage protection, auto-restart or latching
line UV	Line brown-in/out protection
OV	Line overvoltage shutdown extends line surge withstand
OTP	Accurate thermal shutdown, hysteretic or latching
Efficiency(Typ.)	83%
Frequency Range	47~63HZ
Storage Temperature	0-50°C

Product View



14 CM

Packaging View



15 CM



13"

11"

Applications

